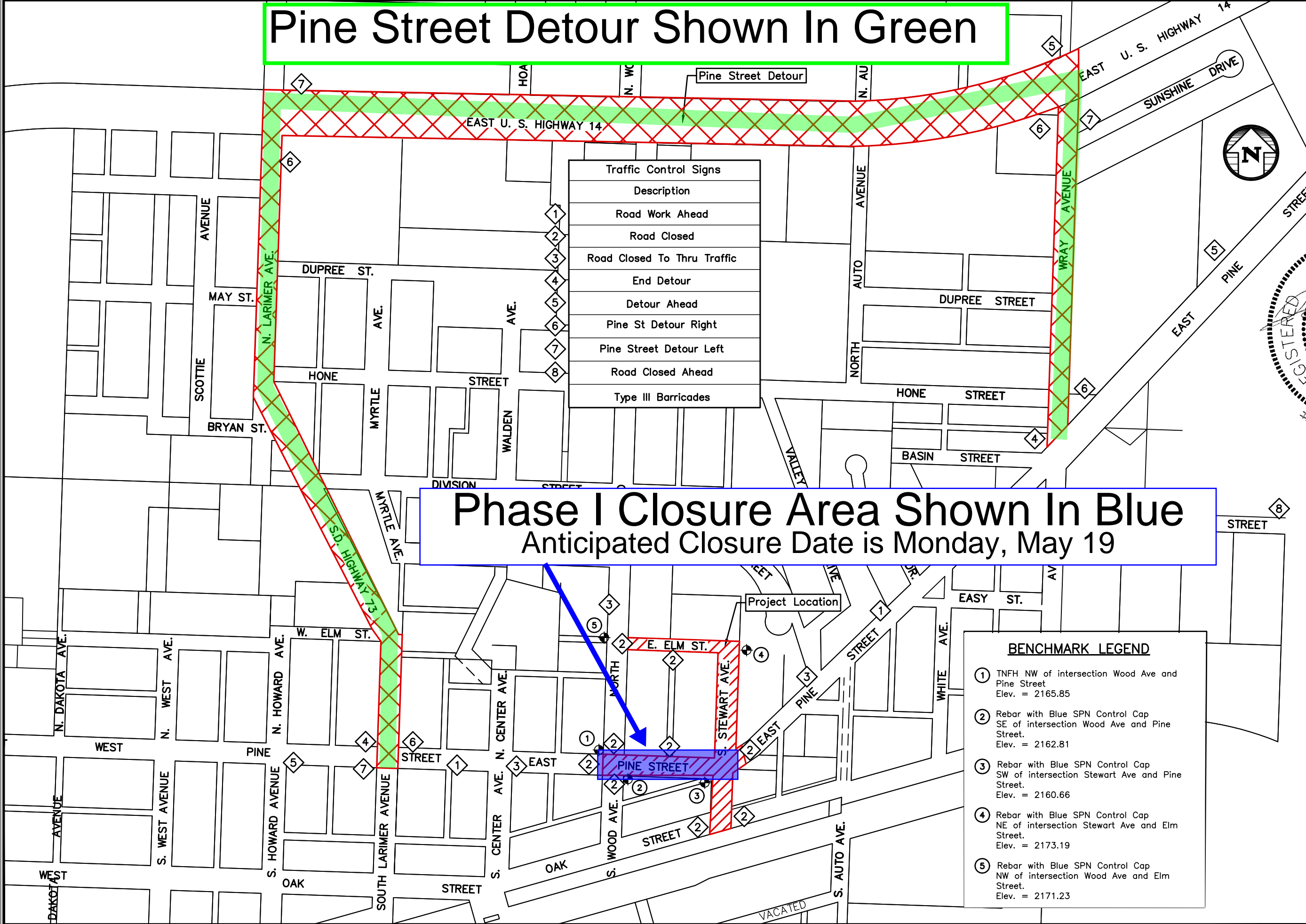


Pine Street Detour Shown In Green



Traffic Control Signs	Description
1	Road Work Ahead
2	Road Closed
3	Road Closed To Thru Traffic
4	End Detour
5	Detour Ahead
6	Pine St Detour Right
7	Pine Street Detour Left
8	Road Closed Ahead
	Type III Barricades

Phase I Closure Area Shown In Blue

Anticipated Closure Date is Monday, May 19

BENCHMARK LEGEND

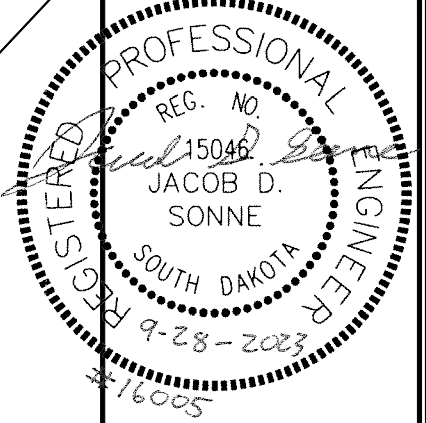
- 1 TNFH NW of intersection Wood Ave and Pine Street
Elev. = 2165.85
- 2 Rebar with Blue SPN Control Cap
SE of intersection Wood Ave and Pine Street.
Elev. = 2162.81
- 3 Rebar with Blue SPN Control Cap
SW of intersection Stewart Ave and Pine Street.
Elev. = 2160.66
- 4 Rebar with Blue SPN Control Cap
NE of intersection Stewart Ave and Elm Street.
Elev. = 2173.19
- 5 Rebar with Blue SPN Control Cap
NW of intersection Wood Ave and Elm Street.
Elev. = 2171.23

SPN
& Associates

Engineers - Planners - Surveyors
2100 North Sanborn Boulevard - P.O. Box 398
Mitchell, South Dakota 57301-0398
Phone: (605) 996-7761 - Fax: (605) 996-0015

Certificate

I hereby certify that this plan, specification, or report was prepared by me or under my direct supervision and that I am a duly Registered Professional Engineer under the laws of the State of South Dakota.



Revisions

9/27/2023 Changes Per DANR and City Review.
Revisions By CJK.

Plan Horiz. Scale:	None
Drawn By:	CJK
Checked By:	JDS
Date:	8/4/2023
Project No.:	16005
File Name:	16005-Philip Sanitary-Stewart Ave

Project Name:
Stewart Avenue Sanitary Sewer Improvements

Located in:
Philip, South Dakota

Sheet Name:
Overall Layout Pine Street Detour

Sheet Number:	Total Sheets:
4	48

g:\Files\CAD\land project.r2 (job #s 16000+)\16005-philip sanitary sewer improv\16005-Philip Sanitary-Stewart Ave C&D.dwg, Overall, 10/2/2023 8:44:14 AM